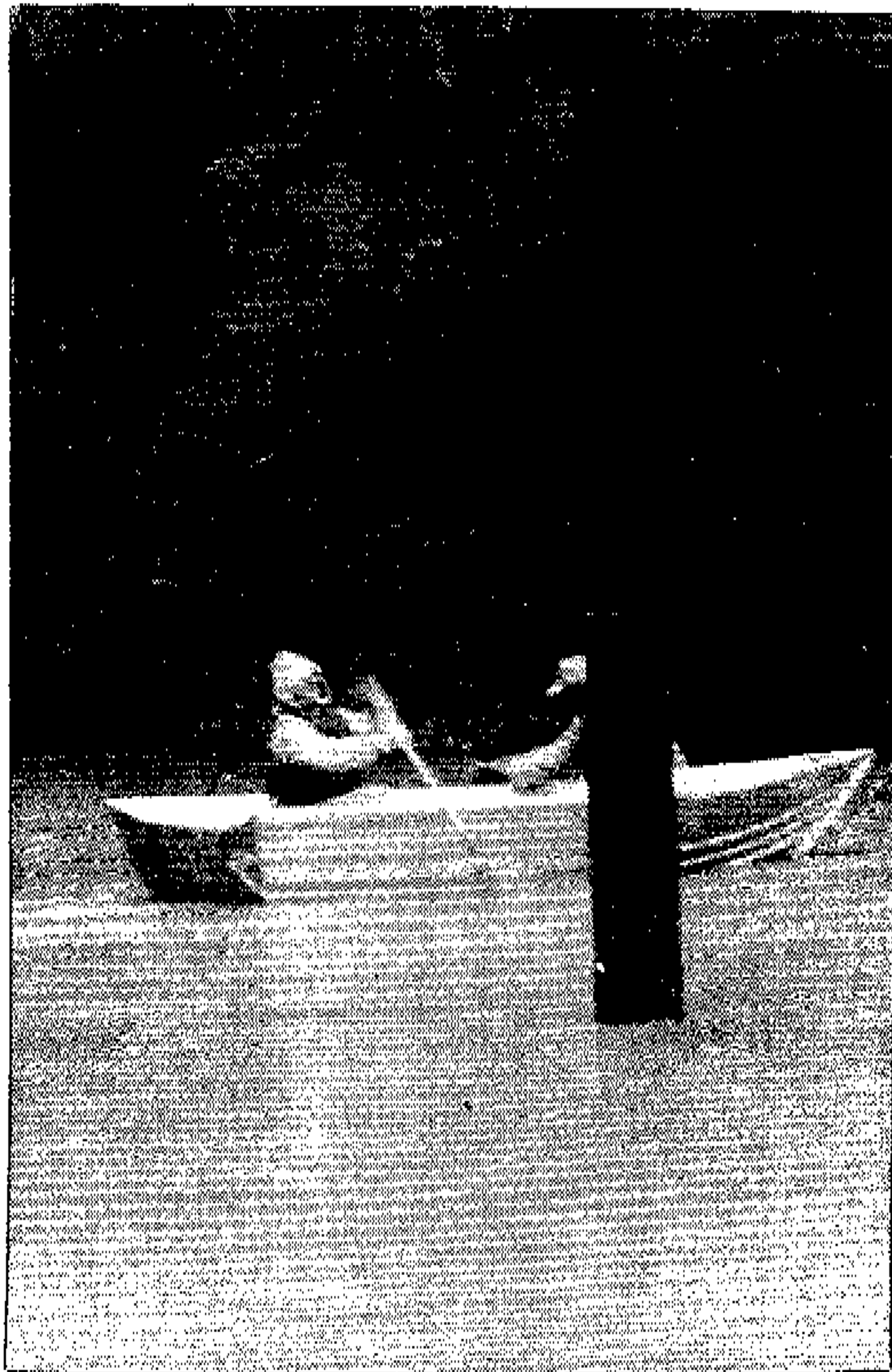


MONTCLARION Friday, January 3, 1997

# East Bay: mud



Carolyn Younger — STAFF

No this isn't Lake Temescal. Ron Easley and Jerry Chisolm of the city Public Works Department float over a flooded section of Shepherd Canyon Road Thursday trying to locate a clogged storm drain near the soccer field. Motorists had to find alternate routes — or rafts.

## Power outages, mudslides, impassable streets as ground reaches saturation

By Carolyn Younger  
The Montclarion

As Northern California batted down the hatches for the latest in a series of tropical storms, Oakland residents were dealing with their own share of winter-related problems.

On New Year's day, downed trees and power lines on Shepherd Canyon Road added to the rainy mess that flooded a section of the narrow canyon road just above the recently completed fire station 24. Nearly 3,000 customers were without power from 3:40 a.m. to 5 a.m. and continued problems in the area caused power outages through the day and into Thursday. Shepherd Canyon was closed from Banning Drive to Moore as crews worked to clear a tree and repair

ing power lines there. In addition, downed lines yesterday morning south of Clive Avenue and on Skyline affected about 60 customers.

"Trees are just toppling over," said PG&E spokesperson Mary Rodriguez.

Early morning rains Wednesday turned steep pathways and hill trails into fast moving freshets, and in Montclair Village, saturated soil above Mountain Boulevard contributed to a temporary waterfall over an old retaining wall that once supported a railroad trestle.

The New Year's downpour also proved too much for overburdened storm drains in the Lakeshore Avenue business district. The area, a traditional trouble spot, was clear by Thurs-

---

## Mud...

Continued from front page

day, said Ken Harvey, principal supervisor with the Office of Public Works.

Harvey, who keeps track of such matters, said that, unofficially, nearly 2-1/2 inches of rain fell in the Knowland Park area between 3 a.m. and 8 a.m. Jan. 1.

"When you get that much rain in a couple of hours there are going to be problems," he said. "We're going as fast as we can; making every effort to help the citizenry."

Public Works crews, at three-quarter force because of the holidays, worked through the night to clear drains and earth slippage along Skyline and Grizzly Peak boulevards, and in the Claremont Canyon. Rain also undermined a section of Monterey Boulevard be-

---

**W**hen you get that much rain in a couple of hours there are going to be problems. We're going as fast as we can.'

KEN HARVEY, OFFICE OF  
PUBLIC WORKS.

---

tween 35th and Lincoln avenues.

Despite the problems, Banning Drive resident Jim McNeill suggests that residents "count their blessings." Eleven years ago, a tree crashed through McNeill's house. "I remember what things were like before."